


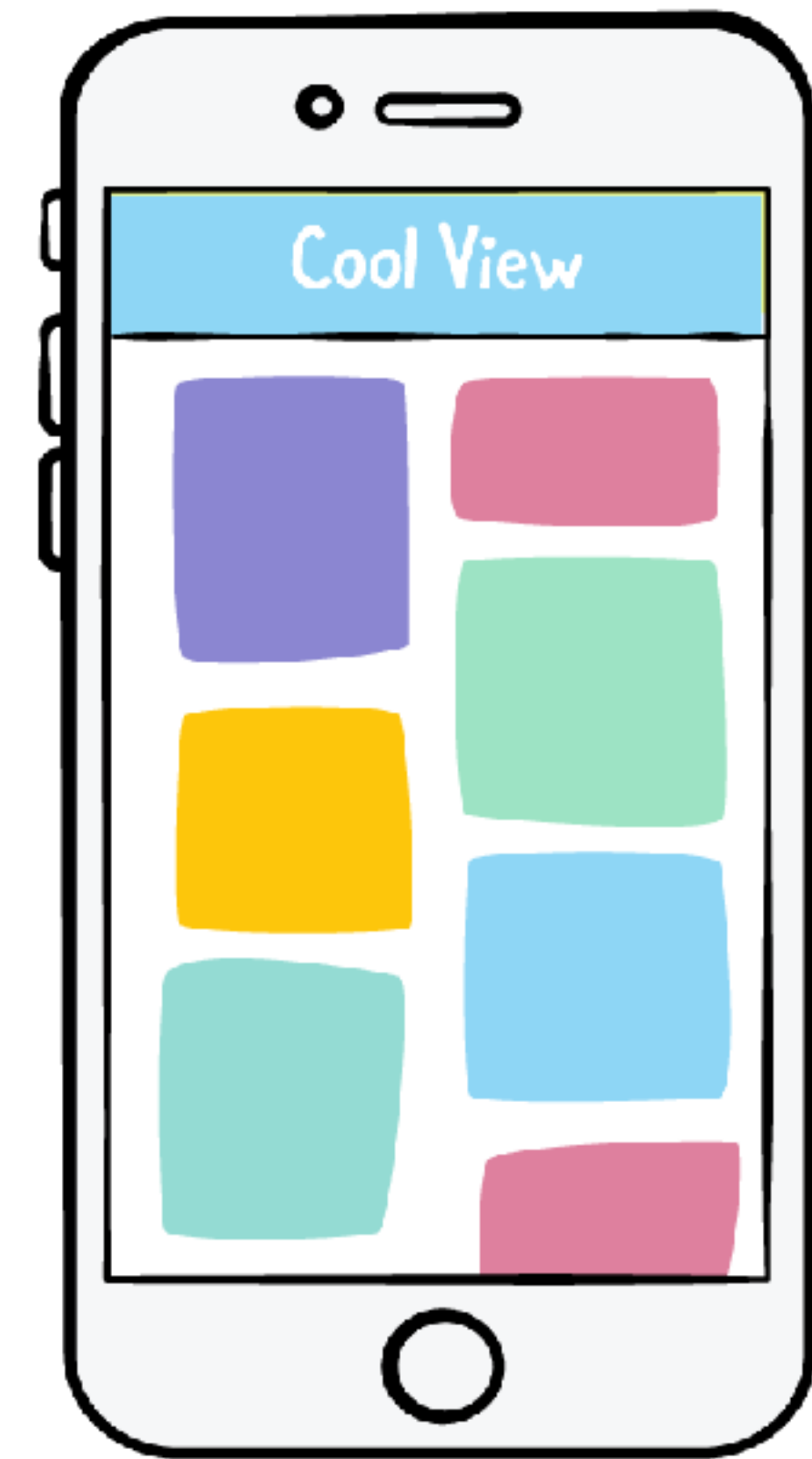


CUSTOM 
COLLECTION
 VIEW
LAYOUT 

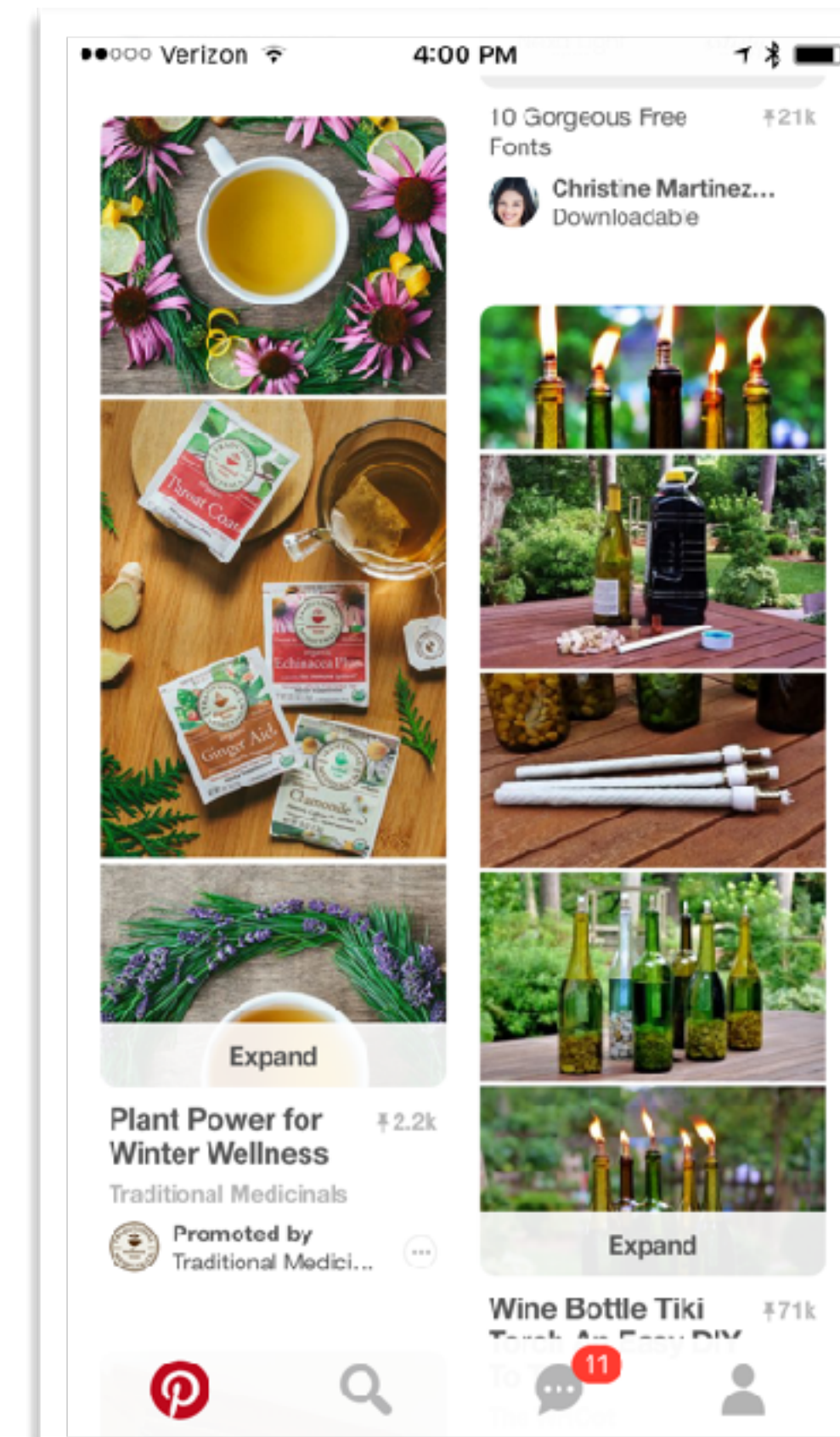
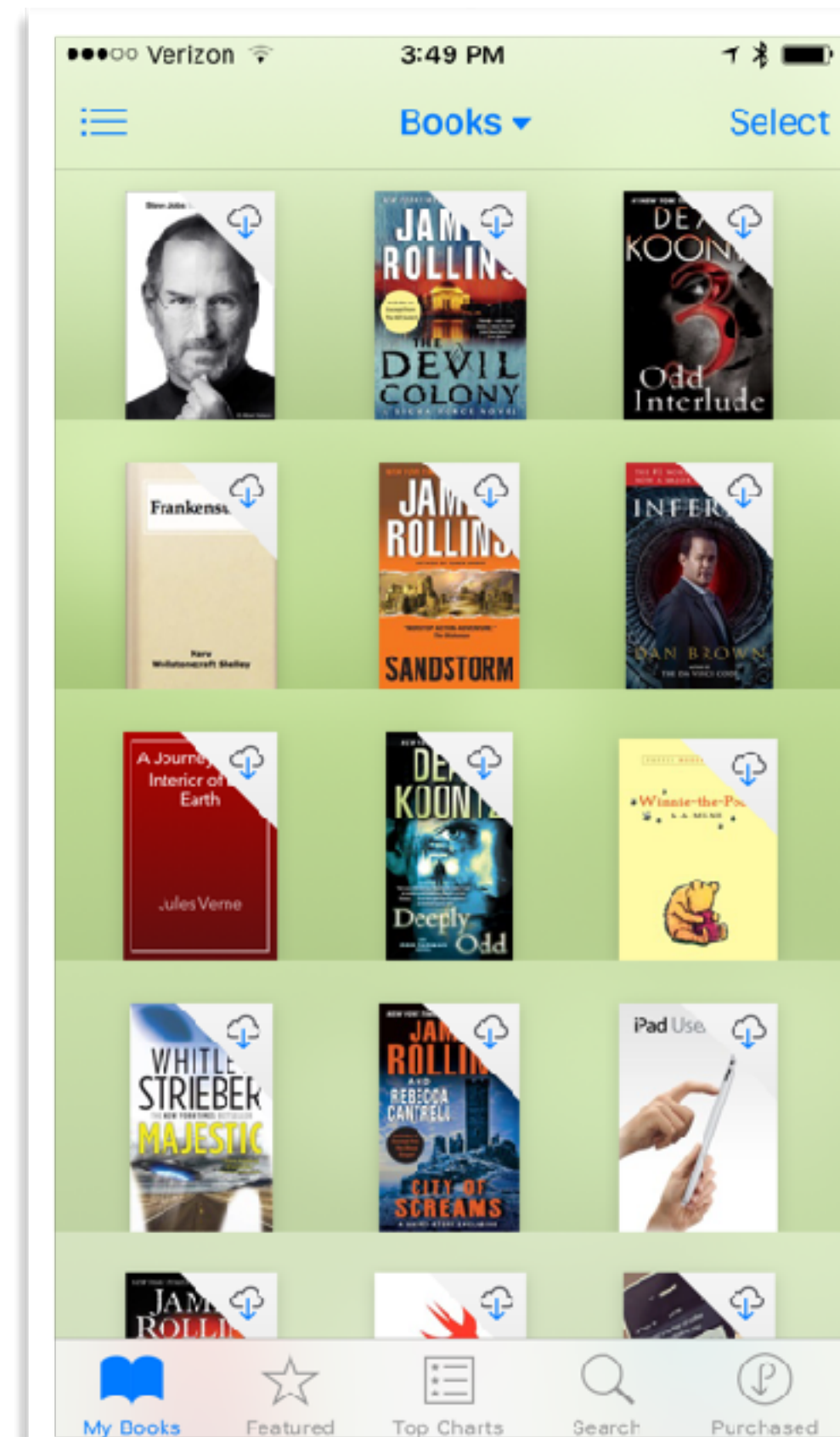


PART 1: INTRODUCTION

WHAT ARE COLLECTION VIEW LAYOUTS?

- ▶ Allows the custom display of data.
- ▶ Each collection view has a layout object.
- ▶ **UICollectionViewFlowLayout** by default.
 - ▶ Provides flexible grid pattern.
 - ▶ Optional header and footer section views.
 - ▶ Can scroll vertically or horizontally.
- ▶ Subclass **UICollectionViewLayout** for further customization of layout.

CUSTOM COLLECTION VIEW LAYOUTS

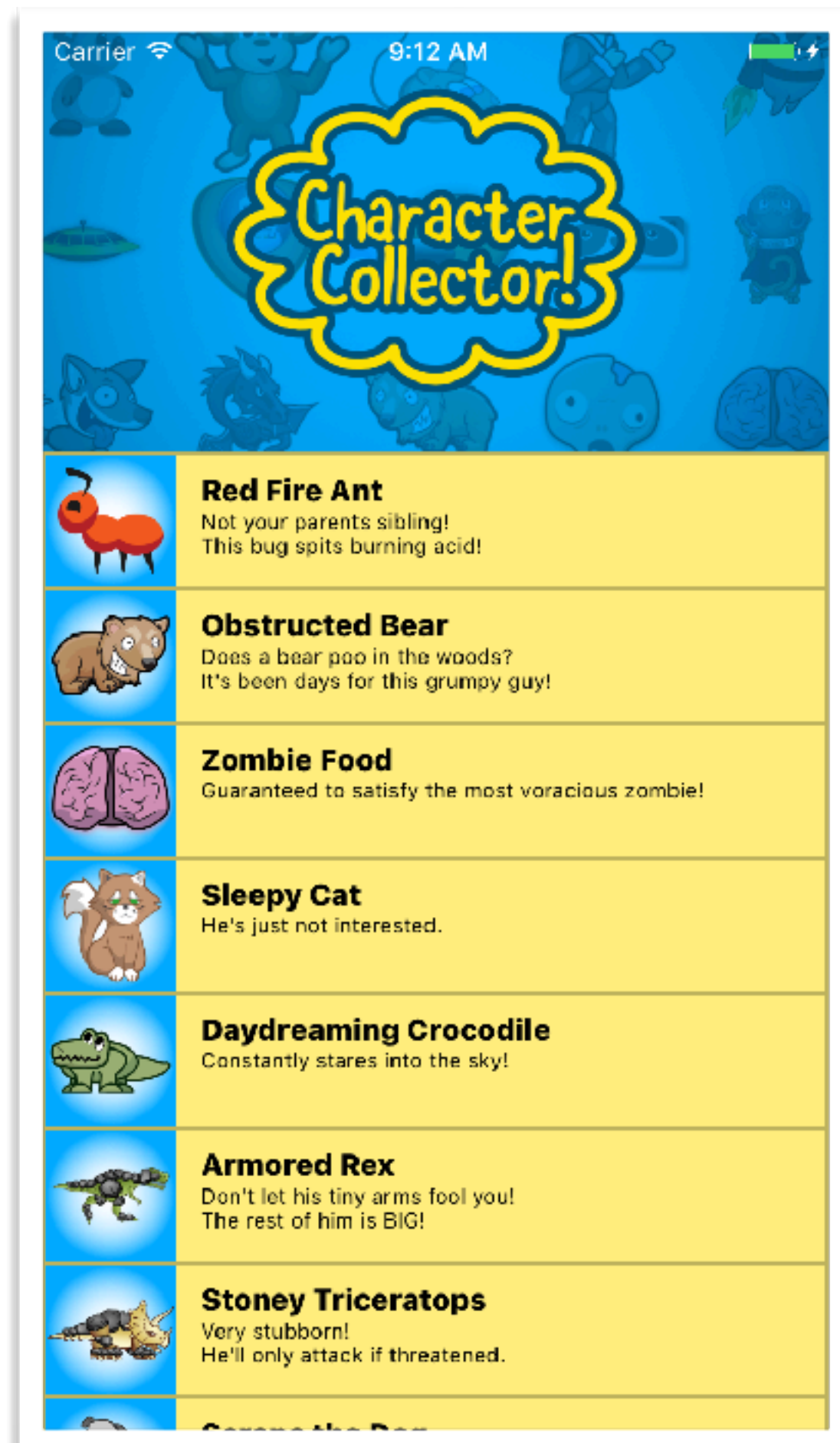


PARTS 2-5: EXPLORING UICollectionViewFlowLayout



- ▶ How flow layout works
- ▶ UICollectionViewDelegateFlowLayout
- ▶ Subclassing UICollectionViewFlowLayout
 - ▶ Cell scale and alpha
- ▶ Subclassing UICollectionViewCell
 - ▶ Cell shape and border
- ▶ Cell snapping

PARTS 6-7: EXPLORING UICollectionViewFlowLayout



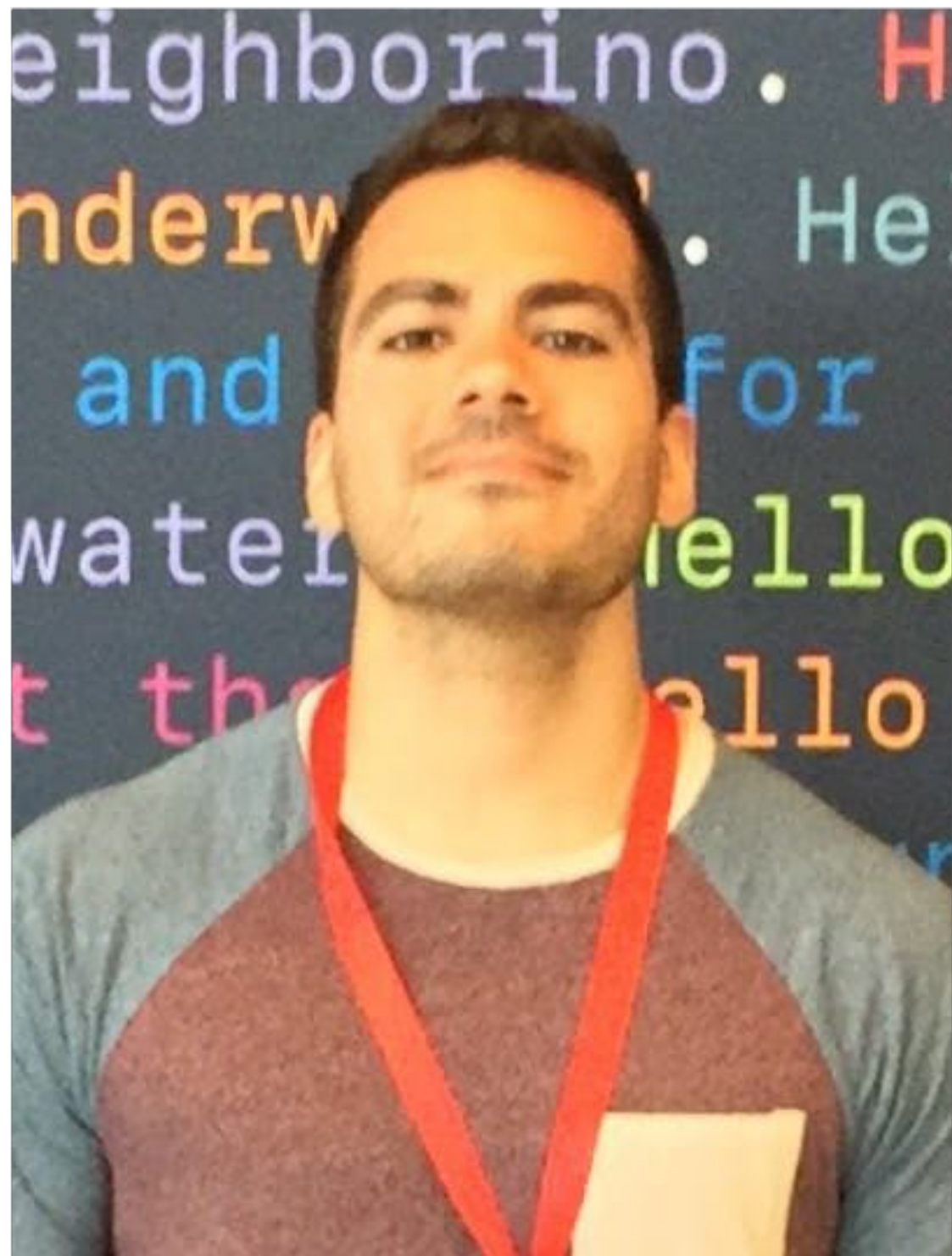
- ▶ Stretchy header layout
- ▶ UICollectionViewLayoutAttributes
- ▶ UICollectionViewReusableViews
- ▶ How to implement headers

PARTS 8-13: EXPLORING UICollectionViewLayout



- ▶ UICollectionViewLayout
- ▶ When to use vs. flow layout
- ▶ How it works
- ▶ UICollectionViewLayoutAttributes
- ▶ Multiple custom layouts

SPECIAL THANKS TO THE TECH EDITORS



Jorge Ramos Moukel

Twitter: @jmoukel



David Worsham

Twitter: @davidworsham

CUSTOM COLLECTION VIEW LAYOUTS

